

V300 (KG2000)

Volumetric cold potable water meter

Max. Flow Rate (qimax)	kL/h	30
Size	mm	50

The V300 (KG2000) is a highly accurate volumetric rotary piston type meter used for the measurement of potable water. Its specially developed thermoplastic measuring chamber is extremely resistant to aggressive water and provides a long working life. The meter starts to register at very low flows and is accurate throughout a wide flow range.

The V300 (KG2000) is suitable for water temperatures up to 50°C and a maximum working pressure of 1400 kPa. Standard counter registration is in kilolitres (kL) and litres.

Compliance with Australian Standards

Every V300 (KG2000) water meter is individually tested for accuracy before despatch. The V300 (KG2000) meter meets the requirements of the Australian Standard:

AS 3565.1-1998, Class 3 Meters for cold potable water Part 1: Volumetric chamber and turbine meters

Design Features

- Positive displacement volumetric rotary piston principle of measurement ensures registration even at the very lowest rates of flow with maintained accuracy over the flow range.
- Can be installed in horizontal, vertical or inclined pipelines without affecting accuracy.
- Requires no calibration throughout its lifespan.
- "O" ring seal placed between the measuring chamber and the meter body ensures that internal leaks which could by-pass the measuring chamber are eliminated.
- Use of advanced engineered plastics for the measuring chamber minimises wear and maintains reliability under all operating conditions.
- A large surface area fine filter fitted on the measuring chamber inlet prevents damage by gathering solid particles. Due to its design, a partially obstructed filter will not affect the meter's accurate registration.



Counter

The V300 (KG2000) has a hermetically sealed register with kilolitres shown in a bold straight reading drum and pointers indicating litres. The "copper can" outer barrier and mineral glass lens ensure moisture is kept out to give clear, condensation free readings over the life of the meter, even in the most severe environments. The counter is protected by a robust housing and lid.

Remote / Electronic Reading

Pulse output capability (at up to three different pulse rates) is standard on the V300 (KG2000) meter. The pulse units can easily be retrofitted on site without breaking the calibration seal or interrupting the supply. Two types of pulse units are available; opto-electronic and reed switch units.

Materials

All V300 (KG2000) meters are manufactured from the highest quality materials ensuring maximum resistance to wear and corrosion. Copper alloys in contact with potable water are de-zincification resistant and comply with the Australian Standard AS 2345. All materials in contact with potable water comply with the Australian Standard AS 4020.

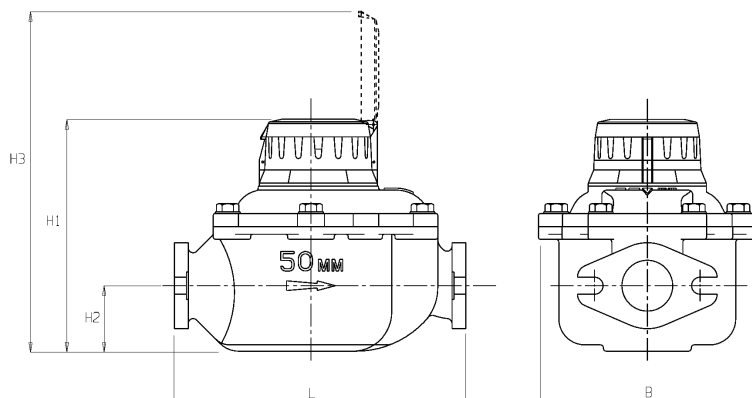
Optional Features

- Opto-electronic pulse unit for use with data loggers, rate of flow equipment and process control equipment.
- Remote battery operated totalising counter with LCD display (T210 Electronic Outreader).
- Reed switch pulse units for use with data loggers, remote counters and process control equipment.
- Meters can be supplied with galvanised steel or brass flange adaptor / connection kits.

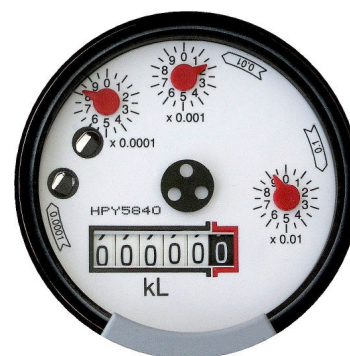
V300 (KG2000) Performance to AS 3565.1-1998, Class 3

Meter Size		50 mm
Nominal flow rate (qn)	kL/h	15.0
Maximum intermittent flow rate (qimax)	kL/h	30.0
Minimum flow rate (qmin)	kL/h	0.15
Maximum continuous flow rate (qcmx)	kL/h	15.0
Minimum registration flow rate (qreg)	kL/h	0.03
Accuracy (qmin to qimax)	%	± 2
Pressure loss at nominal flow rate (qn)	kPa	24.5
Maximum working pressure	kPa	1400
Hydrostatic test pressure	kPa	2100
Maximum working temperature	°C	50
Minimum counter registration	L	0.1
Maximum counter registration	kL	99999.9
Reed switch pulse outputs	Litre / pulse	10 and 100
Opto-electronic pulse output	Litre / pulse	0.1
Dimensions		
Overall meter length (± 1 mm) (L)	mm	300
Height from bottom to top, lid closed (H1)	mm	238
Height from bottom to centre line (H2)	mm	67
Height from bottom to top, lid open (H3)	mm	348
Meter width (B)	mm	223
Approximate bare weight - (Standard packed)	kg	14.5

Dimensions



Counter Details



The Company's policy is one of continuous improvement and the right is reserved to modify the specifications without notice.

Elster Metering Pty Ltd

ABN 98 004 088 680

HEAD OFFICE / VICTORIA:

55 Northcorp Blvd, Broadmeadows VIC 3047

Tel: (03) 9355 2000

Fax: (03) 9355 2001

NEW SOUTH WALES:

14/22 Northumberland Rd, Caringbah NSW 2229

Tel: (02) 8536 7400

Fax: (02) 9526 2244

TASMANIA:

412 Hobart Road, Launceston TAS 7250

Tel: (03) 6344 2466

Fax: (03) 6343 0711

QUEENSLAND:

12 Holland Street, Northgate QLD 4013

Tel: (07) 3266 7733

Fax: (07) 3266 7695

WESTERN AUSTRALIA:

3/19 Action Road, Malaga WA 6090

Tel: (08) 9248 7899

Fax: (08) 9248 9499

Website: www.elstermetering.com

Leaflet No: SML003 08/07