

# S 100 / M 140

## Apartment water meters for remote reading

With retrofittable radio module



- ✘ Type EV-A/MO-A/MOZ-A.
- ✘ Nominal flow rate  $Q_n$  1.5 ... 2.5.
- ✘ Superdry water meter with sealed register.
- ✘ Roller counter displays actual consumption.
- ✘ Pulse switch for data transmission to radio module.
- ✘ Radio module retrofits whenever required.
- ✘ Matching adapters for many cartridge models.
- ✘ Cold water up to 50°C, warm water up to 90°C.

# S 100 / M 140

## Remote reading via retrofittable radio module

### The future-proof range to choose from

#### Remote reading causes quite a stir

No doubt, nowadays remote reading plays an ever more important role in the apartment management industry. The elegant and comfortable method of choice is the remote reading via radio – so to say, the “icing “ on the meter.

A flexible generation of meters enters the race:

- S 100 single-jet meter, type EV-A
- M 140 multi-jet meter, type MO-A
- M 140 multi-jet meter, type MOZ-A (MO-I up to now).

#### Remote reading as option

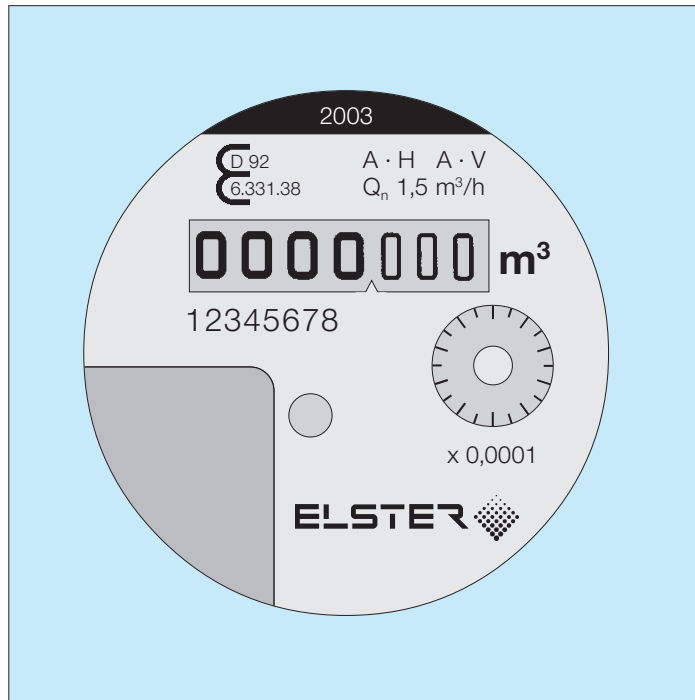
On the one hand, our apartment water meters can be read on site.

On the other hand, they are perfectly suited for retrofitting with a radio module.

In order to achieve that, we have modified all successful meter types – naturally without changing their basic concept. This means amongst other criteria: the metrological classes remain effective. For the standard-range meters there are of course brochures available that inform about technical data and special features in detail.

The retrofitting can be done quickly and simply by pushing the radio module onto the register, in fact, without interrupting the validity of verification. Only the blind cap must be removed and the sealing ring is to be replaced.

The data transmission is the job of the pulse giver in the same reliable way as already proven in the pulse output meters. A magnet inside the register affects the reed switch in the radio module: 1 pulse stands for 0.5 litre.



#### Remote reading widens the scope of the water meter significantly

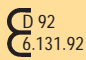
The type MO-C and MO-Z (MO-I up to now) is absolutely flexible with its modular lay-out: meter body and measuring insert are independent of each other.

Once such meters are installed, the mechanical measuring insert can easily be replaced (screw action). The meter body remains in the pipe. If a measuring insert with radio module capacity will now be installed, the meter is prepared for later upgrade to remote reading – without further complication.

One more info: for a big range of measuring-insert models, matching adapters are now available. It pays off to uniformly equip your meters with radio!

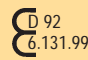
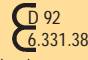
#### Single-jet meter EV-A

##### Dry-dial meter

- Cold water up to 30 °C. 
- Warm water up to 90 °C. 
- Horizontal or vertical position  
Approval A/H:  
Class A, horizontal.  
Approval A/V:  
Class A, vertical.
- Display capacity:  
roller counter  
9999.999 m³.
- Minimum scale value  
0.05 l.

#### Multi-jet meter MO-A / MOZ-A

##### Dry-dial meter

- Cold water up to 30 °C. 
- Warm water up to 90 °C. 
- Horizontal or vertical position  
Approval A/H:  
Class A, horizontal.  
Approval A/V:  
Class A, vertical.
- Display capacity:  
roller counter  
9999.999 m³.
- Minimum scale value  
0.05 l.

#### Remote reading protects consumers' privacy

The need to enter the consumer's apartment is reduced to the few times when the meters must be replaced after expiration of the certification period. The tenant can compare the invoiced data with his own readings: the roller counter displays the current consumption.

For the billing companies the consumption data of warm and cold meters are being transferred via a separate or integrated transmitter onto receivers and from there onto a data-logger. This way the data is available for the billing company's EDP.

The radio receivers, capturing the signals within a radius of 15m, read the meters on up to three floors. Of course there is no need for expensive wiring !

By the way, dishonest “economising“ has no chance. The radio module features a manipulation detection, which emits an alarm.

The radio module is not part of this water meter. Information on the radio module and accessories will happily be provided on request. Compatible with rcu4 radio system of Kundo Systemtechnik.

# Ordering information

## Apartment water meter EV-A prepared for radio module retrofit



Sealed register with transparent hood. Meter body plated.  
Class A certification

| Flow rate<br>$Q_n$<br>m <sup>3</sup> /h | Nominal size<br>DN<br>inches | Meter length<br>mm | sealed register    |                    |
|---|------------------------------|--------------------|--------------------|--------------------|
|   |                              |                    | $T_{max}$<br>50 °C | $T_{max}$<br>90 °C |
| 1.5                                     | 1/2                          | 80                 | EVZK-AK<br>0708917 | EVZW-AK<br>0708968 |
| 1.5                                     | 1/2                          | 110                | 0709042            | 0709085            |
| 1.5                                     | 1/2                          | 130                | 0709093            | 0709123            |
| 1.5                                     | 3/4                          | 110                | 0709182            | 0709190            |
| 1.5                                     | 3/4                          | 130                | 0709131            | 0709174            |
| 2.5                                     | 3/4                          | 130                | 0709328            | 0709360            |

## Measuring insert MO-A prepared for radio module retrofit



Sealed register with transparent hood. Sealing ring.  
With adapter for meter body MO-E.  
Class A certification

| Flow rate<br>$Q_n$<br>m <sup>3</sup> /h | Nominal size<br>DN<br>inches | Meter length<br>mm | sealed register    |                    |
|---|------------------------------|--------------------|--------------------|--------------------|
|   |                              |                    | $T_{max}$<br>50 °C | $T_{max}$<br>90 °C |
| 1.5                                     | —                            | —                  | MOK-AK<br>0709387  | MOW-AK<br>0709433  |
| grey plastic                            |                              |                    | 1133078            |                    |

Sealing ring



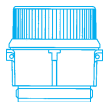
For meter bodies, accessories and adapters see booklet L 02.01

## Mounting block MO-A prepared for radio module retrofit. Valve connection meter and bathtub-meter



| Flow rate<br>$Q_n$<br>m <sup>3</sup> /h | Nominal size<br>DN<br>inches | Meter length<br>mm | sealed register      |                      |
|---|------------------------------|--------------------|----------------------|----------------------|
|   |                              |                    | $T_{max}$<br>50 °C   | $T_{max}$<br>90 °C   |
| 1.5                                     | —                            | —                  | MB-MOK-AK<br>0711896 | MB-MOW-AK<br>0711918 |

**Measuring insert MOZ-A  
prepared for radio module  
retrofit**



Sealing ring



For meter bodies,  
accessories and adapters,  
see booklet L 02.04

Sealed register with transparent hood. Sealing ring.  
Class A certification

| Flow rate<br>$Q_n$<br>m <sup>3</sup> /h | Nominal size<br>DN<br>inches | Meter length<br>mm | $T_{max}$<br>50 °C | sealed register<br>$T_{max}$<br>90 °C |
|---|------------------------------|--------------------|--------------------|---------------------------------------|
| 1.5                                     | —                            | —                  | MOZK-AK<br>0710423 | MOZW-AK<br>0710458                    |
| grey plastic                            |                              |                    |                    | 0713422                               |

**Mounting block MOZ-A  
prepared for radio module  
retrofit.**

**Valve connection meter and  
bathtub-meter**



Radio module and accessories  
(transmitter, receiver and  
datalogger) on request

| Flow rate<br>$Q_n$<br>m <sup>3</sup> /h | Nominal size<br>DN<br>inches | Meter length<br>mm | $T_{max}$<br>50 °C    | sealed register<br>$T_{max}$<br>90 °C |
|---|------------------------------|--------------------|-----------------------|---------------------------------------|
| 1.5                                     | —                            | —                  | MB-MOZK-AK<br>0709387 | MB-MOZW-AK<br>0709433                 |



**ELSTER Messtechnik GmbH**  
Otto-Hahn-Strasse 25  
D-68623 Lampertheim  
Phone +49 (0) 62 06 / 9 33-0  
Telefax +49 (0) 62 06 / 9 33-100  
messtechnik@de.elster.com  
www.elstermesstechnik.com

L 02.14e/ 11.03  
Changes may occur  
without notice

