

The Kent Range of Domestic Meters

Q100 Domestic water meter

Metering for the information age



Q100 domestic water meter

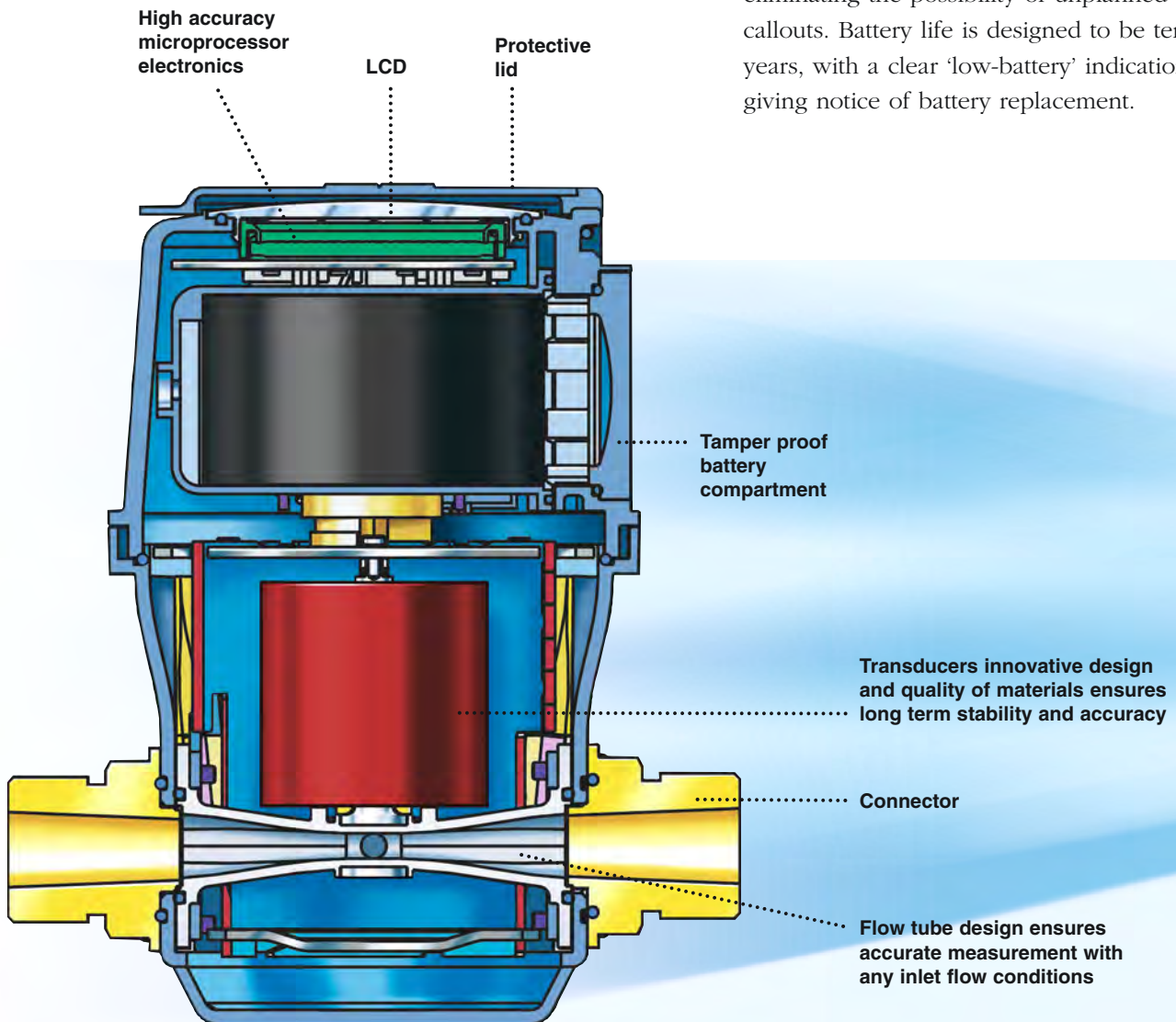
- **Greater accuracy over working lifespan – (exceeds) Class D requirements**
- **Longer working life – no moving parts**
- **Lower overall life-cycle costs**
- **Provides valuable customer data**
- **Immune to blockages caused by small particles**
- **Working temperatures up to 55°C and working pressures up to 16 Bar**
- **Extremely low head loss – less than 0.4 Bar at 3000 l/h**
- **Choice of serial or pulse output**

Utilising the proven electro-magnetic fluid metering principle in an innovative new Elster design, the Q100 meter establishes a new performance benchmark in domestic water metering.

Q100 provides a foundation for reliable, information-focused metering and billing systems, with high accuracy and low operational costs.

Cut maintenance to the minimum

With no moving parts to wear, Q100 makes dramatic savings on maintenance and replacement costs. Q100 is also immune to blockages caused by small particles – thereby eliminating the possibility of unplanned callouts. Battery life is designed to be ten years, with a clear 'low-battery' indication giving notice of battery replacement.



Maximise your billing accuracy

The Q100's high accuracy level gives greater revenue earning potential. And with no moving parts to wear, high accuracy is maintained throughout the working life of the meter.

Also, Q100 is not affected by air, and reverse flows are measured with the same accuracy as forward flows.

Improve your service – and your competitiveness

Q100 allows you to be flexible and responsive, to meet your customers' needs, without compromising your profitability.

Keep your installation costs low

Manufactured from impact-resistant engineering polymer, Q100 is tough, light and fully sealed against water ingress, making it easy to store, transport and handle

on-site. It can be installed in any orientation without affecting accuracy. And, with a dynamic range of more than 400:1, one size of meter is able to cover a wide range of Qn1.0/1.5 applications – allowing the utility company to hold reduced levels of stock.

Speed up meter reading, for additional cost savings

Q100 can be read using various technologies, enabling guaranteed access and faster, easier reading.

The Q100 is compatible with Elster's world leading Scancode system.

The display features a wide range of status indicators, providing warnings of events ranging from leakage to unauthorised battery removal.



A Reverse flow warning indicates any continuous reverse flow exceeding 15 litres

B Burst warning indicates when flow of over 1,000 l/h exceeds 1 hour duration

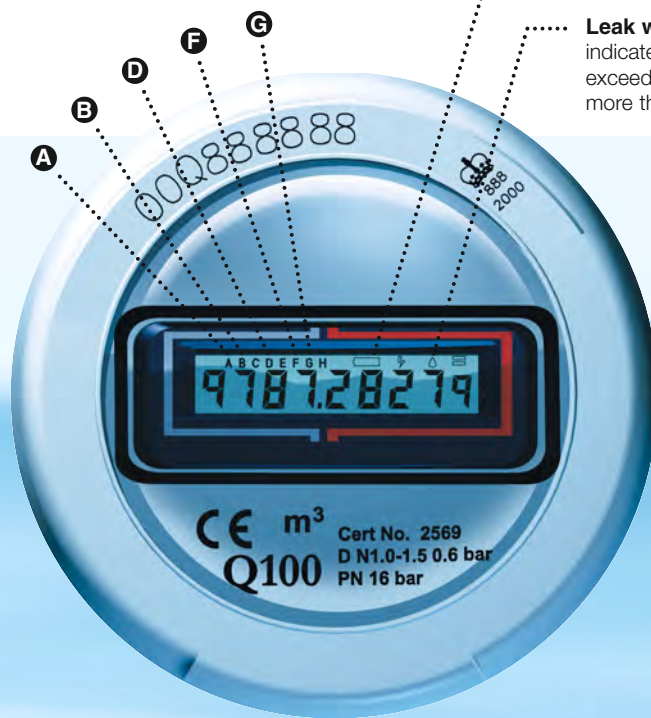
D Meter dry warning indicates if meter remains dry for more than 3 hours

F Battery tamper warning indicates if power cut-off occurs

G Zero flow warning indicates if reading changes by less than 10 litres over 30 days

Battery low warning indicates when battery life is less than 6 months

Leak warning indicates if flow exceeding 10 l/h lasts more than 24 hours

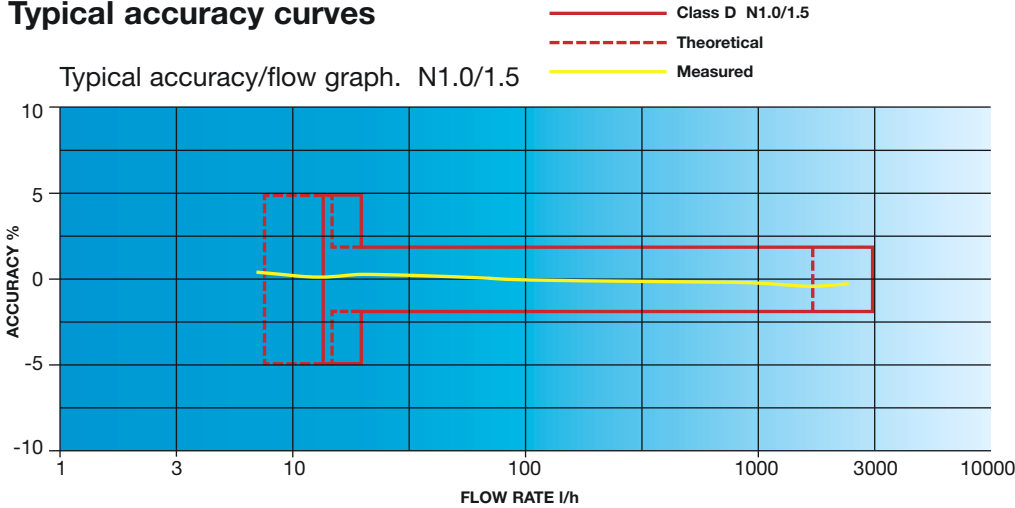


Q100

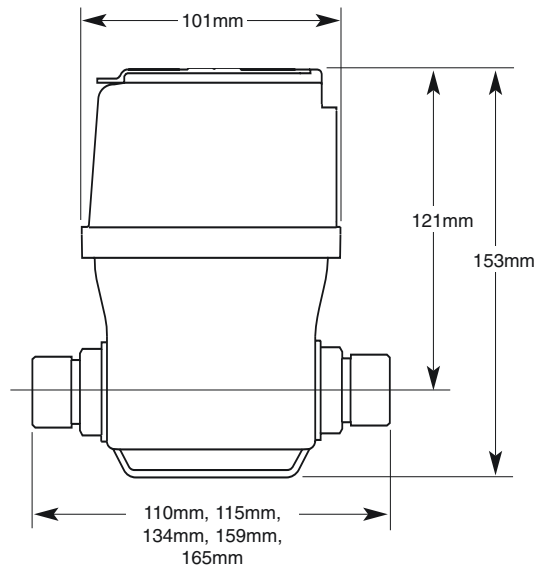
Performance data

Class			Class C	Class D
Meter thread size	in		G 1/2" B	G 1/2" B
Overload flowrate	qs	m ³ /hr	3.0	3.0
Permanent flowrate	qp	m ³ /hr	1.5	1.5
Transitional flowrate	qt	l/hr	15	11.5
Minimum flowrate	qmin	l/hr	10.0	7.5
Headloss at maximum flowrate	bar		0.6	0.6

Typical accuracy curves



Q100



Elster Metering Limited
 Pondwicks Road
 Luton, Bedfordshire
 LU1 3LJ, United Kingdom
 Telephone +44 (0)1582 402020
 Facsimile +44 (0)1582 438051
 Website: www.elstermetering.com
 E-mail: water.metering@gb.elster.com

8504B9261

The Company's policy is one of continuous improvement and the right is reserved to modify the specifications without notice.