

# H4000P Kent range of bulk Woltmann cold water meters

Engineered to match your specifications



# H4000P Woltmann cold water meters

The H4000P is a Woltmann-type meter designed for measuring bulk flows of cold potable water for revenue billing in commercial or industrial applications and distribution system monitoring.

The H4000P incorporates an inductive pulse target which can be read by a tamper proof, bi-directional inductive pulse transmitter. This will allow customers to monitor water flow in both forward and reverse directions. The inductive pulse transmitter is self-powered by its own internal battery.

## Key features

- Extended low and high flow performance
- Water temperature up to 50°C
- Working pressure up to 16 bar
- Robust shroud and polymer register for long life and clear readability
- Exceeds Class B specification in forward direction
- Interchangeable mechanism assembly for ease of serviceability
- Inductive pulse output for increased management information

Available in ten sizes for flow rates between 0.35 m<sup>3</sup>/h and 2000 m<sup>3</sup>/h, the H4000P operates at temperatures up to 50°C and a maximum working pressure of 16 bar. The meter complies with all relevant international quality standards, exceeding ISO4064, BS5728 Class B specifications for forward flow installations in horizontal and vertical pipelines.

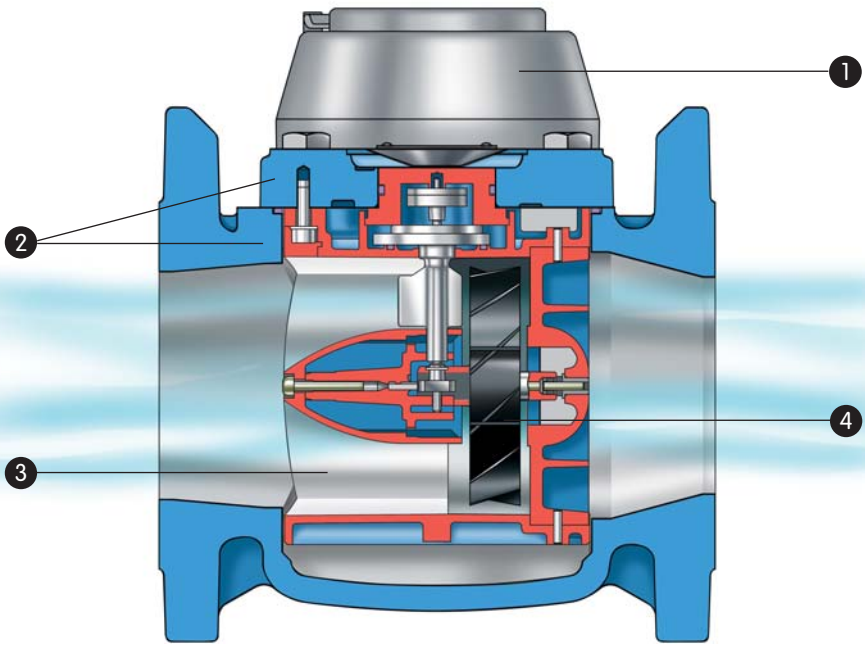
## Robust construction

Like all Elster meters, the H4000P is manufactured from the highest quality materials for maximum resistance to wear and corrosion. Meter body and cover are epoxy powder coated for protection in all environments. Thrust pads and stub spindles are manufactured in tungsten carbide for maximum wear life. All wetted materials are UK WRAS approved against health risk.

## In-line strainer

The use of an Elster in-line strainer is recommended to protect the rotor and help reduce the effect of turbulence.





- 1 Register
- 2 Epoxy powder coated body and cover
- 3 Maximum length flow straightening vanes
- 4 Low mass rotor with hydrodynamic thrust relief



## About Elster Group

A world leader in advanced metering infrastructure, integrated metering, and utilisation solutions to the gas, electricity and water industries, Elster's systems and solutions reflect over 170 years of knowledge and experience in measuring precious resources and energy. Elster provides solutions and advanced technologies to help utilities more easily, efficiently and reliably obtain and use advanced metering intelligence to improve customer service, enhance operational efficiency, and increase customer benefits. Elster's AMI solutions enable utilities to cost-effectively deliver, manage, and conserve the life-essential resources of gas, electricity, and water. Elster has over 7500 staff and operations in 38 countries in North and South America, Europe, and Asia.

For additional information, visit [www.elster.com](http://www.elster.com)

WEEE producer identification number:  
WEE/EJ0221XT/PRO

Elster Metering Limited  
130 Camford Way  
Sundon Park  
Luton  
Bedfordshire  
LU3 3AN  
United Kingdom  
T: +44 (0)1582 846400  
F: +44 (0)1582 564728  
[water.metering@gb.elster.com](mailto:water.metering@gb.elster.com)  
[www.elstermetering.com](http://www.elstermetering.com)

Copyright © 2009 Elster Group  
All rights reserved.  
No part of the publication may be reproduced in any material form without the written permission of the Elster Group except in accordance with the provisions of the Copyright, Designs and Patents Act 1988.

The Company's policy is one of continuous improvement and the right is reserved to modify the specifications without notice.